

READING SCHEDULE #2a

BIOGRAPHIES

4 Books/year

The Benge Biographies are all about 200 pages, so you read 25 pages per week. Try to read these aloud as a family! Follow up with more!

Months:

Thomas Edison

Wk1 P 1-25 _____

Wk2 P 26-50 _____

Wk3 P 51-75 _____

Wk4 P 76-100 _____



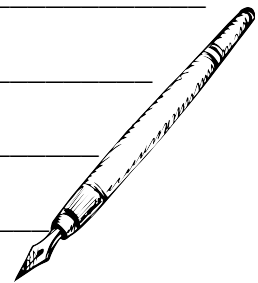
Months:

Wk5 P 101-125 _____

Wk6 P 126-150 _____

Wk7 P 151-175 _____

Wk8 P 175-End _____



Months:

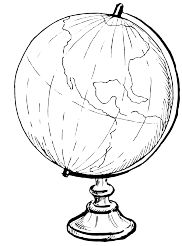
George Washington Carver

Wk9 P 1-25 _____

Wk10 P 26-50 _____

Wk11 P 51-75 _____

Wk12 P 76-100 _____



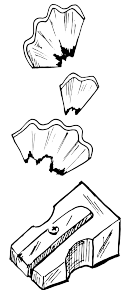
Months:

Wk13 P 101-125 _____

Wk14 P 126-150 _____

Wk15 P 151-175 _____

Wk16 P 175-End _____



Months:

Alan Shephard

Wk17 P 1-25 _____

Wk18 P 26-50 _____

Wk19 P 51-75 _____

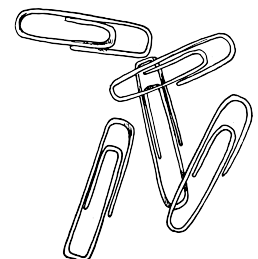
Wk20 P 76-100 _____



Months:

Wk21 P 101-125 _____

Wk22 P 126-150 _____



Wk23 P 151-175 _____

Wk24 P 175-End _____

Months: _____

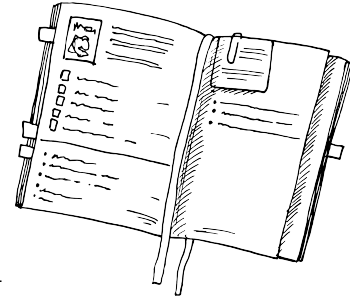
Ben Carson

Wk25 P 1-25 _____

Wk26 P 26-50 _____

Wk27 P 51-75 _____

Wk28 P P 76-100 _____



Months: _____

Wk29 P 101-125 _____

Wk30 P 126-150 _____

Wk31 P 151-175 _____

Wk32 P 175-End _____

