

# READING SCHEDULE #0

The book, *It Couldn't Just Happen: Knowing the Truth about God's Awesome Creation*, is about 256 pages so read 10 pages per week and perhaps finish the year with a biography or two. (If you are a quick reader, either go through the book faster or add supplemental reading of perhaps another of CWS suggestions.)

Months:

Wk1 P 1-10 \_\_\_\_\_

Wk2 P 11-20 \_\_\_\_\_

Wk3 P 21-30 \_\_\_\_\_

Wk4 P 31-40 \_\_\_\_\_



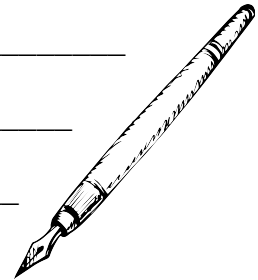
Months:

Wk5 P 41-50 \_\_\_\_\_

Wk6 P 51-60 \_\_\_\_\_

Wk7 P 61-70 \_\_\_\_\_

Wk8 P 71-80 \_\_\_\_\_



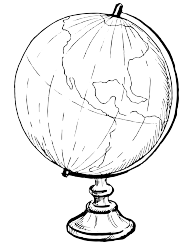
Months:

Wk9 P 81-90 \_\_\_\_\_

Wk10 P 91-100 \_\_\_\_\_

Wk11 P 101-110 \_\_\_\_\_

Wk12 P 111-120 \_\_\_\_\_



Months:

Wk13 P 121-130 \_\_\_\_\_

Wk14 P 131-140 \_\_\_\_\_

Wk15 P 141-150 \_\_\_\_\_

Wk16 P 151-160 \_\_\_\_\_



Months:

Wk17 P 161-170 \_\_\_\_\_

Wk18 P 171-180 \_\_\_\_\_

Wk19 P 181-190 \_\_\_\_\_

Wk20 P 191-200 \_\_\_\_\_



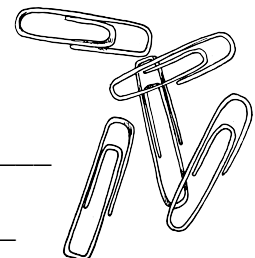
Months:

Wk21 P 201-210 \_\_\_\_\_

Wk22 P 211-220 \_\_\_\_\_

Wk23 P 221-230 \_\_\_\_\_

Wk24 P 231-240 \_\_\_\_\_



---

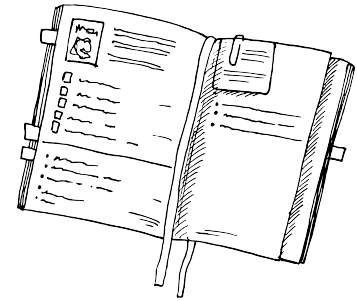
Months:

Wk25 P 241-250 \_\_\_\_\_

Wk26 P 250-finish \_\_\_\_\_

Wk27 Biography \_\_\_\_\_

Wk28 Biography \_\_\_\_\_



---

Months:

Wk29 Biography \_\_\_\_\_

Wk30 Biography \_\_\_\_\_

Wk31 Biography \_\_\_\_\_

Wk32 Biography \_\_\_\_\_

